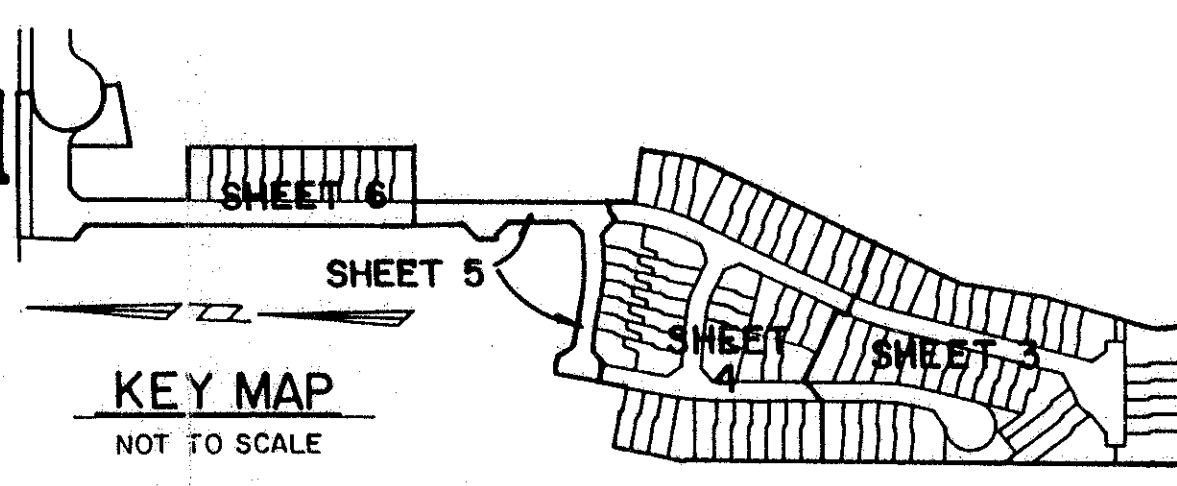


# LAKE CHARLESTON TRACT "G" PLAT I

A PART OF LAKE CHARLESTON PLANNED UNIT DEVELOPMENT  
BEING A REPLAT OF A PORTION OF TRACT G OF LAKE CHARLESTON PLAT NO. 3 AS RECORDED IN  
PLAT BOOK 62, PAGES 55 THRU 68, PUBLIC RECORDS OF PALM BEACH COUNTY, FLORIDA  
LYING IN SECTION 9, TOWNSHIP 45 SOUTH, RANGE 42 EAST, PALM BEACH COUNTY, FLORIDA  
SHEET 3 OF 6

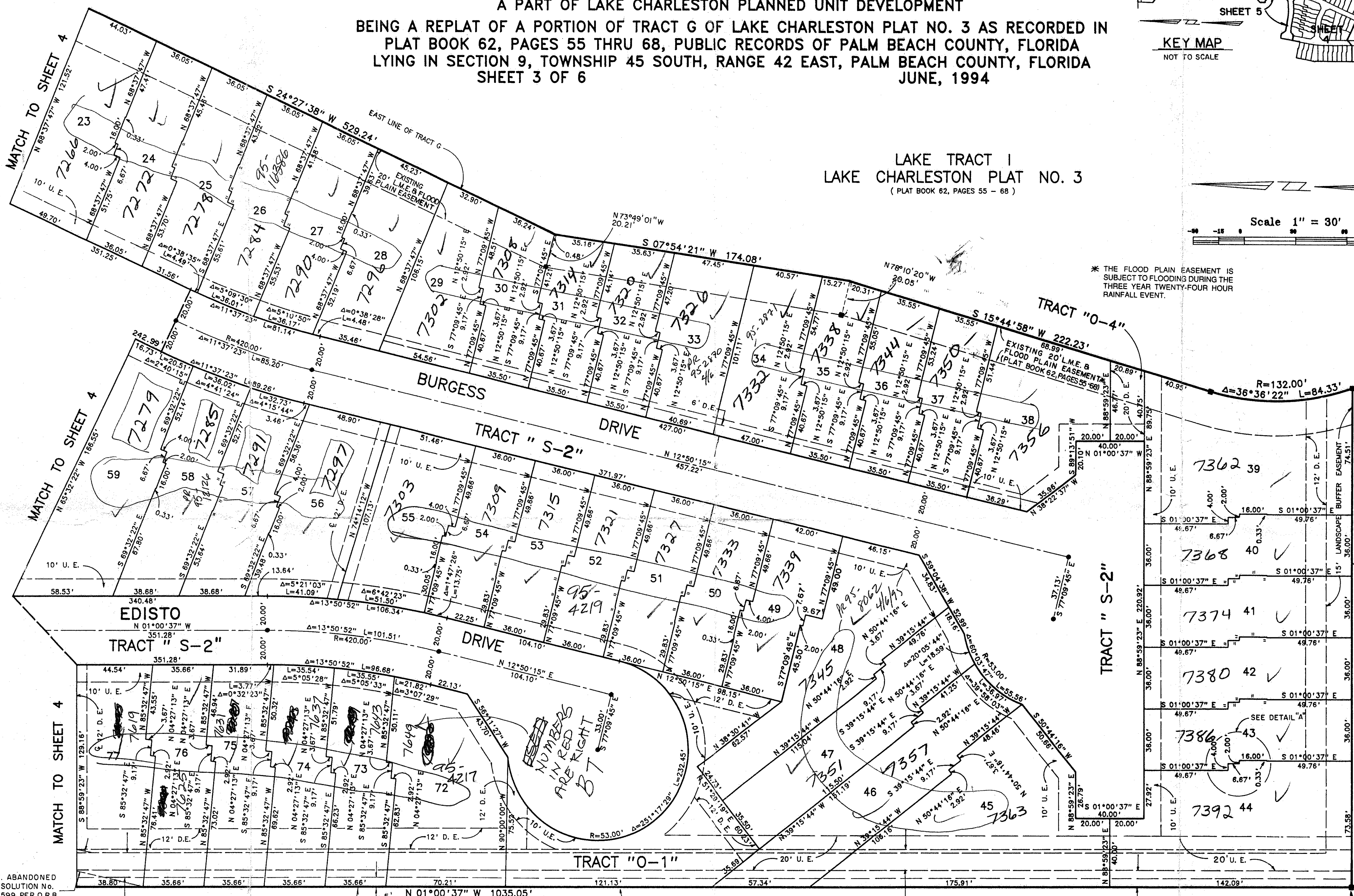


LAKE TRACT I  
LAKE CHARLESTON PLAT NO. 3  
( PLAT BOOK 62, PAGES 55 - 68 )

Scale 1" = 30'

*PET. 86-96  
ALLOC. #0001  
5/24/21*

\* THE FLOOD PLAIN EASEMENT IS  
SUBJECT TO FLOODING DURING THE  
THREE YEAR TWENTY-FOUR HOUR  
RAINFALL EVENT.



DETAIL "A"  
N.T.S.

TYPICAL FOR LOTS 23 THRU 28,  
LOTS 39 THRU 44 & LOTS 49 THRU 59

Subdivision: Lake Charleston Tract "G"  
Book: 74  
Page: 34  
Flood Map: RSA  
Quad: #49  
Zoning: RT5  
SE: 86-96  
PUR NAME: BLS/SLD

TAZ-439

12' U.E. ABANDONED BY RESOLUTION NO. R-93-599 PER O.R.B. 7739, PGS. 173-176.

15' LANDSCAPE BUFFER EASEMENT

LAKE WORTH DRAINAGE DISTRICT E-2-E CANAL  
(O.R.B. 3289, PAGES 49 - 59)

EXISTING 12' U.E. (PLAT BOOK 62, PAGES 55-66)

EXISTING 10' EASEMENT IN FAVOR OF LAKE WORTH DRAINAGE DISTRICT (O.R.B. 5770, PAGES 129 - 133)

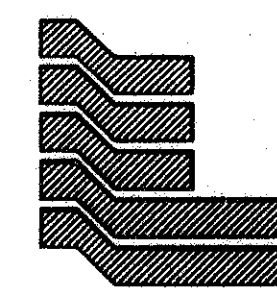
P.O.B. SOUTHWEST CORNER OF TRACT G LAKE CHARLESTON PLAT NO. 3 (PLAT BOOK 62, PAGES 55-68)

74/34

0533-028

FLORIDA S TURNPIKE (SUNSHINE STATE PARKWAY)

THIS INSTRUMENT WAS PREPARED BY LESLIE BISPOIT UNDER THE SUPERVISION OF CRAIG S. PUSEY, PROFESSIONAL LAND SURVEYOR OF LANDMARK SURVEYING & MAPPING, INC.



Landmark Surveying & Mapping Inc.  
1850 FOREST HILL BOULEVARD  
PH. (407)433-5405 SUITE 100 W.P.B. FLORIDA

LAKE CHARLESTON TRACT "G" PLAT I

STATE OF FLORIDA  
COUNTY OF PALM BEACH  
This Plat was filed for record at \_\_\_\_\_  
M. this \_\_\_\_\_ day of \_\_\_\_\_, 19\_\_\_\_  
and duly recorded in Plat Book No. \_\_\_\_\_  
on Page \_\_\_\_\_  
Dorothy H. Wilken, Clerk of the Circuit Court  
By \_\_\_\_\_ D.C.